

San Telequip Private Limited.
504 & 505 Deron Heights, Baner Road
Pune 411045, India
Phone : +91-20-27273455, 9764027070, 8390069393
email : info@santelequip.com



Connecting. Converting. Leading !

SC10E Series

Serial Device Server

User's Manual

Document Name: User Manual for 8 Port RS232/RS485 Serial Device Server

CHAPTER 1: PRODUCT INTRODUCTION	2
1.1 PRODUCT DESCRIPTION	2
1.2 PRODUCT FEATURE	2
CHAPTER 2: FUNCTIONS	3
2.1 FRONT PANEL	3
2.1.1 <i>Front Panel Description</i>	3
2.1.2 <i>LED Indications</i>	3
2.1.3 <i>Ethernet Port</i>	3
2.2 REAR PANEL	3
CHAPTER 3: TECHNICAL SPECIFICATION	4
3.1 SERIAL SIGNALS.....	4
3.2 ETHERNET INTERFACE	4
3.3 POWER REQUIREMENTS.....	4
3.3 ENVIRONMENTAL LIMITS	4
3.4 PHYSICAL CHARACTERISTICS.....	4
CHAPTER 4: SOFTWARE INSTRUCTIONS	5
4.1 VIRTUAL SERIAL PORT SOFTWARE INSTALLATION.....	5
4.2 VIRTUAL SERIAL PORT SOFTWARE DESCRIPTION	7
4.3 DEVICE MANAGER SOFTWARE INTRODUCTION.....	9
4.4 WEB NETWORK MANAGEMENT PROFILE	11
4.4.1 USING YOUR WEB BROWSER	11

Chapter 1: Product Introduction

1.1 Product Description

The SC10E008G I Serial Device Server can be used to connect any serial device to an Ethernet network, and support various operating modes. In particular, the SC10E08G I Serial Device Server supports TCP Server, TCP Client, UDP and Virtual COM modes for security critical applications, such as Banking, Telecom, Access control, and Remote site management.

The device offers 8 RS-232/RS-485, 4 Ethernet Port (3 UTP,1 SFP). The Serial port supports baud rate from 1200bps~115200bps.

1.2 Product Feature

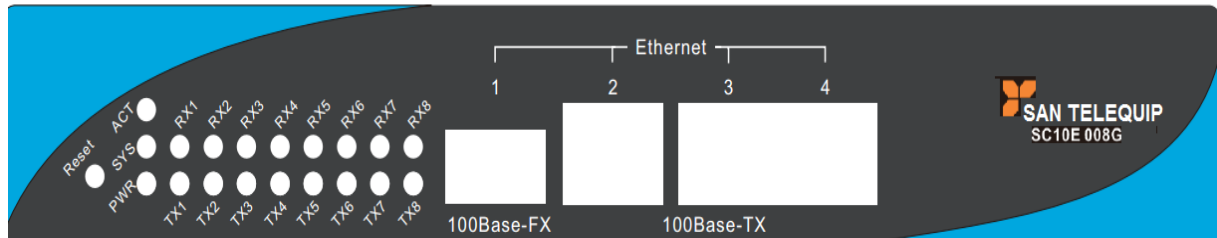
- 8 RS-232/RS-485, the connector adopts 5-PIN Terminal Block. The serial baud rate supports 1200~115200bps.
- Data access modes including TCP Server, TCP Client, UDP, Virtual COM.
- Versatile socket operating modes including TCP Server, TCP Client, UDP, and Virtual COM driver.
- 4 Ethernet Port,3 of 10/100 BASE-T, RJ45 with LED, full/half duplex self-adaptive, Auto MDI/MDIX; 1 channel 100-FX SFP plug, supporting hot plugging.
- Ethernet ports support Switch mode.
- 100~240V AC or 36~72V DC power supply.

San Telequip Private Limited.
504 & 505 Deron Heights, Baner Road
Pune 411045, India



Phone : +91-20-27273455, 9764027070, 8390069393 Connecting. Converting. Leading !
email : info@santelequip.com

Chapter 2: Functions



2.1 Front Panel

2.1.1 Front Panel Description

There are Power LED, System Run LED, RX, TX of Serial Port LED, Fiber Act LED and Ethernet Port LED.

2.1.2 LED Indications

LED Name	LED Color	LED Function	
PWR	Green	On	Unit is powered
		Off	Unit is off
SYS	Yellow	Blinking	System is working normally
		Off	System is abnormal.
ACT0	Green	On	Fiber Port is connected.
		Off	Fiber Port is disconnected.
TX DAT1 to 8	Green	Blinking	There is data sending.
		Off	No data or No connection.
RX DAT1 to 8	Green	Blinking	There is data receiving.
		Off	No data or No connection.

2.1.3 Ethernet Port

4 Ethernet Port,3 of 10/100 BASE-T with RJ45 with LED, full/half duplex self-adaptive, it supports auto MDI/MDIX; 1 channel 100-FX with SFP plug, supporting hot plug.

2.2 Rear Panel



Power port, 5-pin Industrial Terminal Interface.

Power Port Details

Type of Power	POWER	PGND	RETURN
AC220V	L Phase	GND	N Neutral
DC48V	Positive	GND	Negative

San Telequip Private Limited.
504 & 505 Deron Heights, Baner Road
Pune 411045, India



Phone : +91-20-27273455, 9764027070, 8390069393 Connecting. Converting. Leading !
email : info@santelequip.com

Terminal signals are defined as follows :

PIN	1	2	3	4	5
RS485	D-	D+	GND		
RS232			GND	RXD	TXD

RS232 Connection Details

PC Side 9 Pin Connector	Signal	SC10E008G I
2	RXD	TXD (5)
3	TXD	RXD (4)
5	GND	GND (3)

RS485 Connection Details

Signal of SC10E008G I	Will Connect to
D+	TX+/D+ of your device
D-	TX-/D- of your device

Chapter 3: Technical Specification

3.1 Serial Signals

Pin Name of RS-485: D+/D-/GND

Pin Name of RS-232: TXD/RXD/GND

3.2 Ethernet Interface

Number of UTP Ports : 3
Speed : 10/100 Mbps, auto MDI/MDIX
Connector : RJ45(with LED)
Magnetic Isolation : 1.5 KV built in
Number of Optical Ports: 1
Speed : 100 Mbps
Connector : SFP

3.3 Power Requirements

Input Voltage : DC36V-72V or AC 100-240v
Power Consumption : < 5W

3.3 Environmental Limits

Operating Temperature : 5 to 50°C
Storage Temperature : 40 to 85°C
Ambient Relative Humidity : 5 to 95% (non-condensing)
Atmospheric pressure : 70 to 106 kpa

3.4 Physical Characteristics

Housing : Metal
Dimensions : 40.5 x 143 x 210mm

San Telequip Private Limited.
504 & 505 Deron Heights, Baner Road
Pune 411045, India



Phone : +91-20-27273455, 9764027070, 8390069393 Connecting. Converting. Leading !
email : info@santelequip.com

Chapter 4: Software Instructions

In this chapter, we explain how to configure the Virtual Serial Port Manager.

The following topics are covered in this chapter:

Virtual Serial Port Software Installation

Virtual Serial Port Software Description

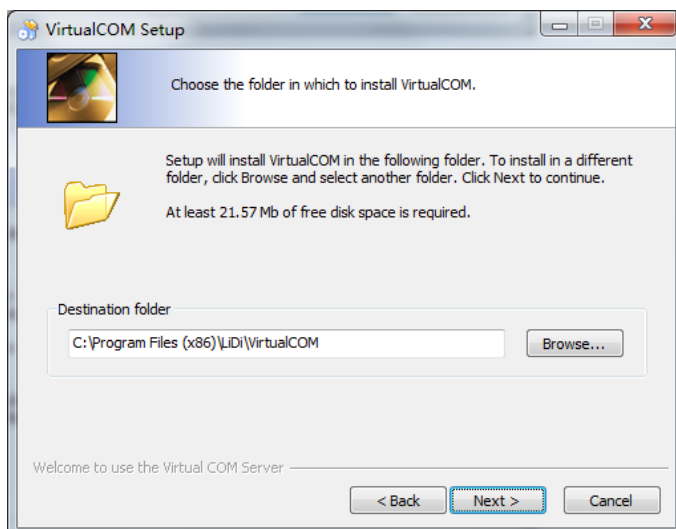
4.1 Virtual Serial Port Software Installation

Users should follow these steps to install the application on a computer of the Windows platform.

Step 1 Double-click to run installation program 'VcomSetupV2.72e_no_tools.exe'.



Step 2 Click "Next" in the welcome windows, and display the following screen. Here you can modify the installation folder.



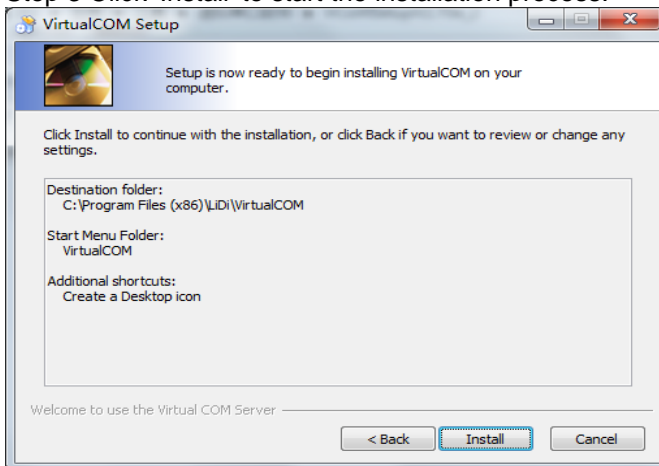
San Telequip Private Limited.
504 & 505 Deron Heights, Baner Road
Pune 411045, India

Phone : +91-20-27273455, 9764027070, 8390069393
email : info@santelequip.com

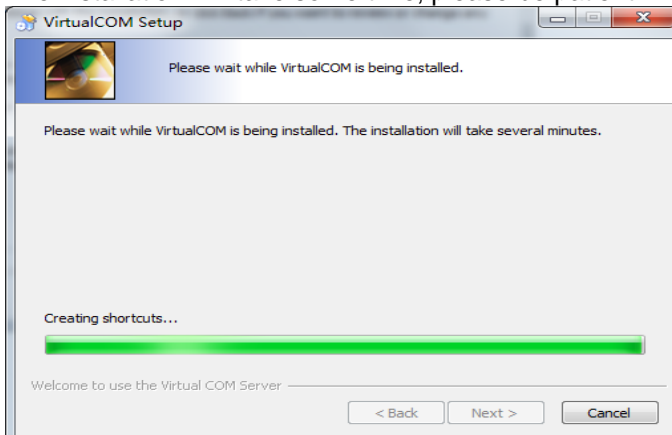


Connecting. Converting. Leading !

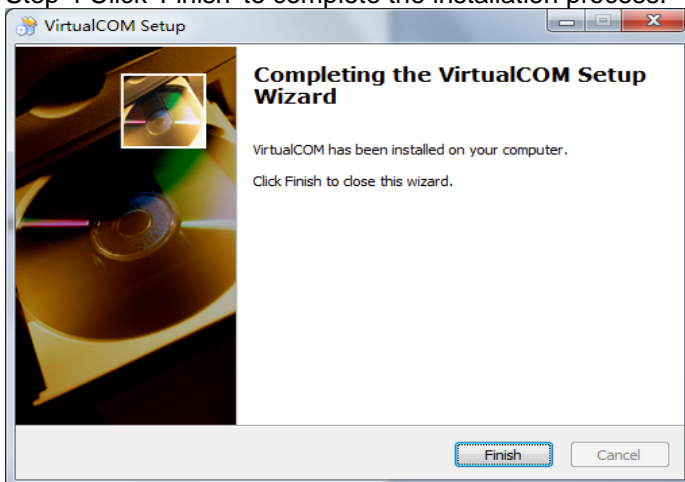
Step 3 Click 'Install' to start the installation process.



The installation will take some time, please be patient!



Step 4 Click 'Finish' to complete the installation process.



San Telequip Private Limited.
 504 & 505 Deron Heights, Baner Road
 Pune 411045, India



Phone : +91-20-27273455, 9764027070, 8390069393 Connecting. Converting. Leading !
 email : info@santelequip.com

4.2 Virtual Serial port Software Description

Virtual serial port software is used to simulate the serial port of the field devices on the computer. Virtual serial port software show ports as follows:

VCOM	Operate Mode	Local Port	Device IP:Port	Com Status	Net Status	Last Operation	Synchronize	Descriptio
COM2	TCP Server	8001	any:any	Closed	Off	VCOM is created	Disable	
COM3	TCP Server	8002	any:any	Closed	Off	VCOM is created	Disable	
COM4	TCP Server	8003	any:any	Closed	Off	VCOM is created	Disable	
COM5	TCP Server	8004	any:any	Closed	Off	VCOM is created	Disable	
COM6	TCP Server	8005	any:any	Closed	Off	VCOM is created	Disable	
COM7	TCP Server	8006	any:any	Closed	Off	VCOM is created	Disable	
COM8	TCP Server	8007	any:any	Closed	Off	VCOM is created	Disable	
COM9	TCP Server	8008	any:any	Closed	Off	VCOM is created	Disable	

Virtual Serial port Management

Add virtual serial port:

Click the icon to add serial ports, there will pop-up a dialog box. According to the mapping mode selected, it will show corresponding dialog boxes as follows:

Serial Sync: Enable
 VCOM ID Start: COM18
 VCOM Count: 1
 Description:
 Operating Mode: UDP
 Local Port: 8017
 Device IP: 0 . 0 . 0 . 0
 Device Port: 8036
 OK Close

Serial Sync: Enable
 VCOM ID Start: COM18
 VCOM Count: 1
 Description:
 Operating Mode: TCP Server
 Local Port: 8017
 OK Close

Serial Sync: Enable
 VCOM ID Start: COM18
 VCOM Count: 1
 Description:
 Operating Mode: TCP Client
 Device IP: 0 . 0 . 0 . 0
 Device Port: 8036
 OK Close

San Telequip Private Limited.
 504 & 505 Deron Heights, Baner Road
 Pune 411045, India



Phone : +91-20-27273455, 9764027070, 8390069393 Connecting. Converting. Leading !
 email : info@santelequip.com

Parameter Description

Serial Synch : This device does not support synchronization!
 VCom ID Start : Select starting virtual serial port, COM2~COM512.
 VCom Count : This device supports up to 32
 Description : Any Remarks / Information.
 Operating Mode : Select UDP, TCP client and TCP server.

UDP mode:

The Local Port : Set the computer local port.
 Device Address : Set the IP address corresponding to the remote serial device server.
 Device Port : Set the port corresponding to the remote serial server.

TCP client mode:

Device Address : Set the IP address corresponding to the remote serial device server.
 Device Port : Set the port corresponding to the remote serial server.

TCP Server mode:

The Local Port: Set the computer local port.

The following table lists the relevant parameters (also apply to socket communication mode):

Computer virtual serial port config (Assuming the computer's IP address: IP A, Port: Port A)	Device Config (Assuming the computer's IP address: IP B, Port: Port B)
Mapping Mode : TCP server The Local Port : Port A	Working Mode : TCP Client Listening Port : NA Server IP : IP A Server Port : Port A
Mapping Mode : TCP Client Device Address : IP B Device Port : Port B	Working Mode : TCP server Listening Port : Port B Server IP : NA Server Port : NA
Mapping Mode : UDP The Local Port : Port A Device Address : IP B Device Port : Port B	Working Mode : UDP Listening Port : Port B Server IP : IP A Server Port : Port A

Deleting a virtual serial port

Select the corresponding virtual serial port, click the  icon to delete.

Modify the virtual serial port

Select the corresponding virtual serial port, click the  icon to edit.

Operation attentions

Make sure that all the firewalls including windows firewall should be closed during VirtualCOM software installation.

San Telequip Private Limited.
504 & 505 Deron Heights, Baner Road
Pune 411045, India

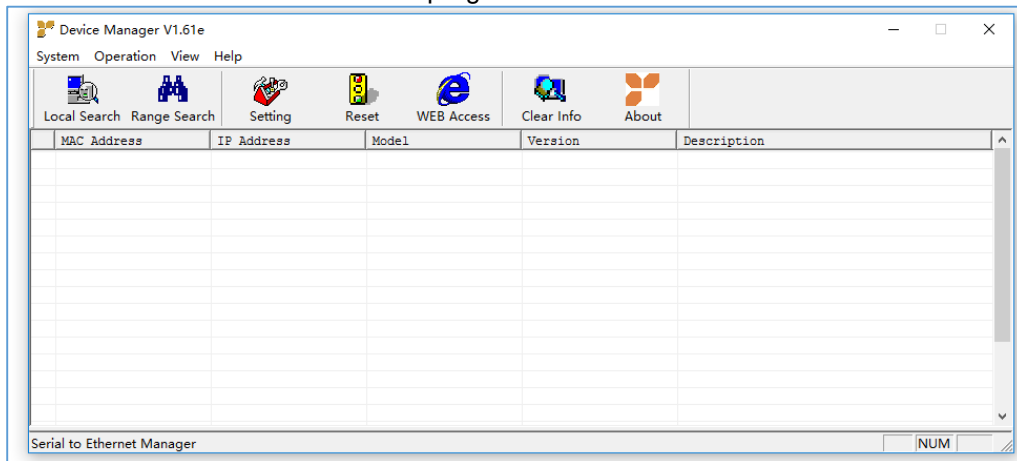


Phone : +91-20-27273455, 9764027070, 8390069393 Connecting. Converting. Leading !
email : info@santelequip.com

4.3 Device Manager Software Introduction

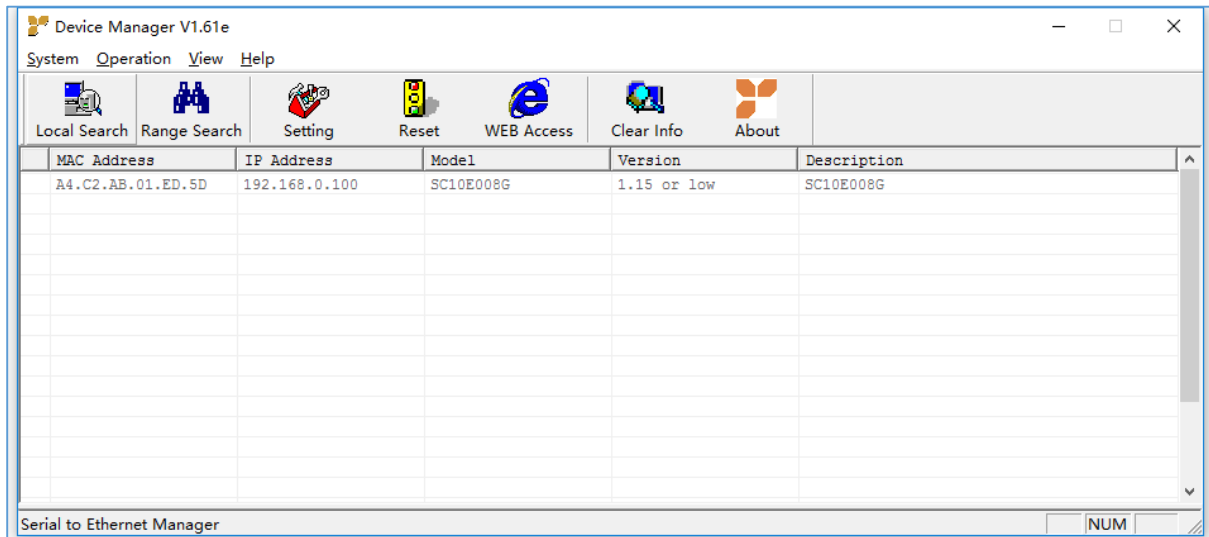
Device Manager is a comprehensive Windows GUI that can be used to conveniently configure and maintain multiple Serial Devices. It can search all the device, check and config network parameter and serial port parameter of device; it also can remote update and reset device.

Firstly, open the Device Manager “ DeviceManagerV1.61e.exe ”, you can select related button or menu to use the each function in program offered.



Searching Device

Through press “Local Search” button to update all Serial Device that are connected to the same LAN as your computer.

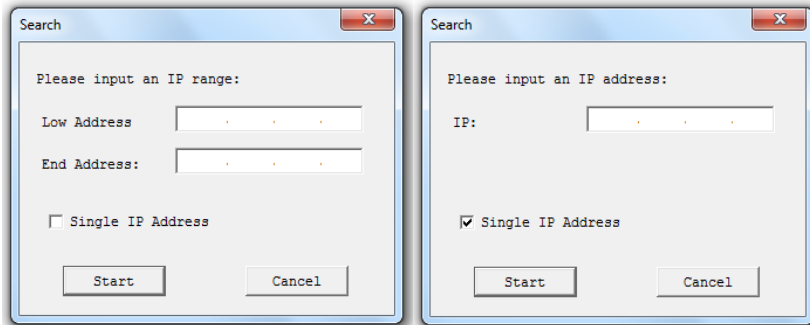


Also the devices can be searched by IP Range Search or the fixed IP address.

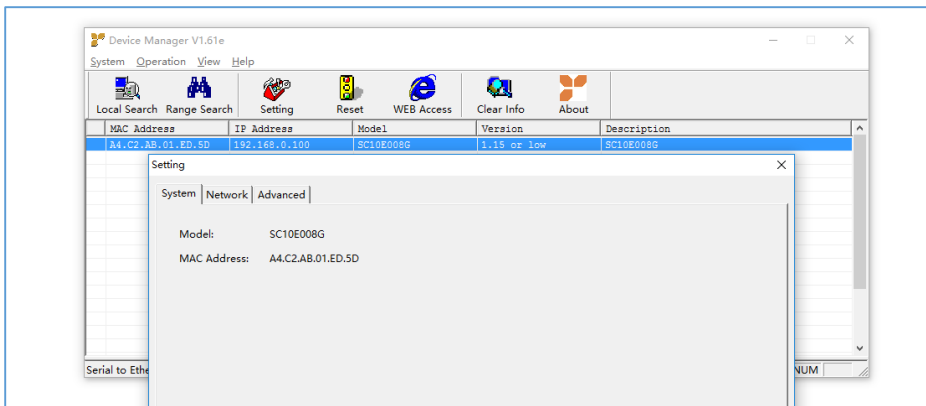
San Telequip Private Limited.
 504 & 505 Deron Heights, Baner Road
 Pune 411045, India



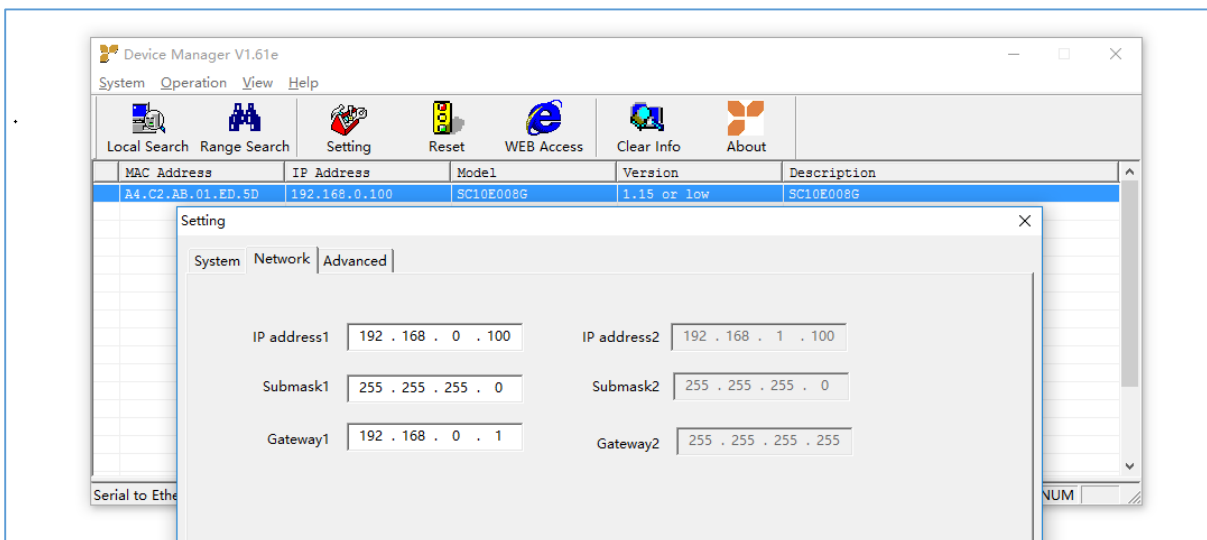
Phone : +91-20-27273455, 9764027070, 8390069393 Connecting. Converting. Leading !
 email : info@santelequip.com



Setting to modify the configuration of a particular Serial Device, first select the device entry to highlight it, and then select Setting icon, or click on the setting under the setting menu. Press “System Information” can check the device Model, MAC address.



Press “Network” to show the device IP address, Sub mask and Gateway.

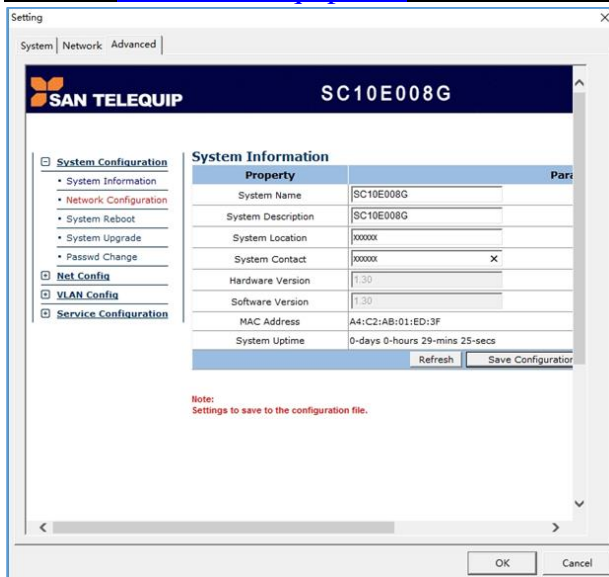


The COM Parameters page to modify the settings of Serial Port.

San Telequip Private Limited.
504 & 505 Deron Heights, Baner Road
Pune 411045, India



Phone : +91-20-27273455, 9764027070, 8390069393 Connecting. Converting. Leading !
email : info@santelequip.com



Min Send Time: Every time converter receives data from serial port, the timer value is set to zero. If the time interval reaches the Min send time and the Serial Port haven't received the next data, then the converter transfers the received data to the network. The default value of device Min Send Time is 100ms.

Min Send Size: When the converter receives this size of data, then it sends the data to the network. The default value of device Min Send Size is 960 bytes. When the converter meets the "Min Send Time" or "Min Send Size" any of the conditions, it will send the data to the network. If serial port is low then we suggest to change the Min Send Size to smaller value.

4.4 WEB Network Management Profile

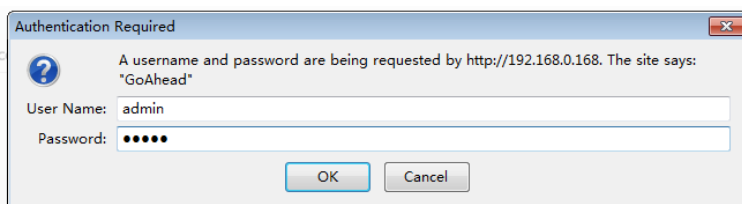
4.4.1 Using Your Web Browser

Open your browser, enter the device IP, and then enter the user name and password as the following steps.

Default IP : IP address:192.168.0.100

User name and password:

The default user "admin" and password are both "admin369".



San Telequip Private Limited.
 504 & 505 Deron Heights, Baner Road
 Pune 411045, India



Phone : +91-20-27273455, 9764027070, 8390069393 Connecting. Converting. Leading !
 email : info@santelequip.com

System Information :

After entering into the web page

- System Configuration
 - System Information
 - Network Configuration
 - System Reboot
 - System Upgrade
 - Passwd Change
- Net Config
- VLAN Config
- Service Configuration

System Information

Property	Parameter
System Name	SC10E008G
System Description	SC10E008G
System Location	xxxxxx
System Contact	xxxxxx
Hardware Version	1.30
Software Version	1.30
MAC Address	A4:C2:AB:01:ED:5D
System Uptime	0-days 0-hours 5-mins 53-secs

Note:
Settings to save to the configuration file.

This page is to set the System Name, System Description, System Location, Contact Information and you could check the Hardware/Software Version, Mac Address, System Uptime.

Network Config

Click Network Configuration, config the IP, Subnet Mask, Gateway of device.

- System Configuration
 - System Information
 - Network Configuration
 - System Reboot
 - System Upgrade
 - Passwd Change
- Net Config
- VLAN Config
- Service Configuration

Network Config

Property	Parameter
IP Address	192.168.0.168
Subnet Mask	255.255.255.0
Default Gateway	192.168.0.1
MAC Address	A4:C2:AB:01:00:00

Note:
Address changes, please enter the new address in the browser to access the device.

System Reboot

Reboot the device or restore factory settings.

- System Configuration
 - System Information
 - Network Configuration
 - System Reboot
 - System Upgrade
 - Passwd Change
- Net Config
- VLAN Config
- Service Configuration

System Reboot

Property	Parameter
System Reboot	<div style="border: 1px solid gray; padding: 2px;"> <div style="background-color: #e6f2ff; padding: 2px;">----</div> <div style="background-color: #e6f2ff; padding: 2px;">Now Reboot</div> <div style="background-color: #e6f2ff; padding: 2px;">Restore factory settings</div> </div>

System Upgrade

This page can upgrade software, firmware, and configuration.

San Telequip Private Limited.
 504 & 505 Deron Heights, Baner Road
 Pune 411045, India
 Phone : +91-20-27273455, 9764027070, 8390069393
 email : info@santelequip.com



Connecting. Converting. Leading !

- System Configuration
 - System Information
 - Network Configuration
 - System Reboot
 - System Upgrade
 - Passwd Change
- Net Config
- VLAN Config
- Service Configuration

System Upgrade

Step 1: Upload the upgrade file.

Browse... No file selected. Upload

Step 2: Upgrade

--- Upgrade

Current Status: No file upload

Note:
 Step 1: Upload
 Step 2: Follow the prompts to choose to upgrade software or config.
 Step 3: After upgrade complete, the system automatically reboot;reboot

Upgrade Tips:

- Step1: Upload the upgrade file.
- Step2: Choose upgrade software, firmware or configuration file to upgrade.
- Step3: There will be Software has been load prompt on the web after upgraded.

Note: Don't power off during upgrading

Change Password

You could change the password on this page.

- System Configuration
 - System Information
 - Network Configuration
 - System Reboot
 - System Upgrade
 - Passwd Change
- Net Config
- VLAN Config
- Service Configuration

Change Passwd

Property	Parameter	
User Name	admin	
Current Passwd		
New Passwd		
New Passwd		

Refresh Save Configuration

Current Status : Not Modified

Note:
 User name is not modify;
 Password length is langer 5.

Net Configuration

You could set the Ethernet Work Mode on this page:10M/100M full-duplex, 10M/100M half-duplex, adaptive mode.

- System Configuration
- Net Config
- VLAN Config
- Service Configuration

Ethernet Port configuration

Property	Parameter	
Ethernet1	100Base-FX	
Ethernet2	Auto	
Ethernet3	Auto	
Ethernet4	Auto	

Refresh Save Configuration

Note:
 Ethernet1 as 100Base-Fx ; Ethernet2.Ethernet3.Ethernet4 as 100Base-TX ;

VLAN Config

Click VLAN Port Config, it can set the VLAN of device and QinQ of function.
 VLAN enable: disabled/enable VLAN function.

- System Configuration
- Net Config
- VLAN Config
 - VLAN Enable
 - VLAN List
 - PVID Config
- Service Configuration

VLAN Enable Configure

Property	Parameter	
VLAN Enabled	Disable	
Upload System	Disable	
QinQ Type	0x88a8	
QinQ PVID	1	
Up port	Ethernet1	

Refresh Save Configuration

Note:
 Ethernet1 as 100Base-Fx ; Ethernet2.Ethernet3.Ethernet4 as 100Base-TX ;

San Telequip Private Limited.
 504 & 505 Deron Heights, Baner Road
 Pune 411045, India



Phone : +91-20-27273455, 9764027070, 8390069393 Connecting. Converting. Leading !
 email : info@santelequip.com

VLAN List: Select the setting VLAN Group on Group No box (16 groups in total). Set the VID value in VID box. Select the Ethernet1, Ethernet2, Ethernet3, Ethernet4 to become member of VLAN List.

- System Configuration
- Net Config
- VLAN Config
 - VLAN Enable
 - VLAN List
 - PVID Config
- Service Configuration

VLAN List Configure

Group No.	VID	Ethernet1	Ethernet2	Ethernet3	Ethernet4
1	1	Member	Member	Member	Member

Refresh Save Configuration

VLAN List

Group No.	VID	Ethernet1	Ethernet2	Ethernet3	Ethernet4
1	1	Member	Member	Member	Member
2	0	---	---	---	---
3	0	---	---	---	---
4	0	---	---	---	---
5	0	---	---	---	---
6	0	---	---	---	---
7	0	---	---	---	---
8	0	---	---	---	---
9	0	---	---	---	---
10	0	---	---	---	---
11	0	---	---	---	---
12	0	---	---	---	---
13	0	---	---	---	---
14	0	---	---	---	---
15	0	---	---	---	---
16	0	---	---	---	---

Note:
Ethernet1 as 100Base-Fx ; Ethernet2,Ethernet3,Ethernet4 as 100Base-TX ;

PVID Value Setting: Add the PVID to each Ethernet Port on PVID box.

- System Configuration
- Net Config
- VLAN Config
 - VLAN Enable
 - VLAN List
 - PVID Config
- Service Configuration

PVID Configure

Port	Ethernet1	Ethernet2	Ethernet3	Ethernet4
Mode	Trunk	Trunk	Trunk	Trunk
PVID	1	1	1	1

Refresh Save Configuration

Note:
PVID : Decimalism;
Ethernet1 as 100Base-Fx ; Ethernet2,Ethernet3,Ethernet4 as 100Base-TX ;

QINQ Function :

QINQ Enable : disabled/ enable QINQ function.

QINQ Type : Fill in type of QINQ.

QINQ PVID Value : Fill in value of QINQ PVID.

Uplink Port Selection : Select QINQ Uplink port.

Serial Configuration

This page is to set single serial port parameters, select the Serial No and then enter the details.

- System Configuration
- Net Config
- VLAN Config
- Service Configuration
 - Serial Configuration
 - Template Config
 - Serial Information
 - Serial Statistics

Serial Port Config

Property	Parameter	
Serial No.	1	
LAN Mode Status	TCP Server	
Number of remote users	1	
Listening Port(1-65535)	8001	
Remote IP/Port 1	192.168.0.169	8001
Remote IP/Port 2	none	none
Remote IP/Port 3	none	none
Remote IP/Port 4	none	none
Baud Rate	9600	
Data Bit	8	
Stop Bit	1	
Parity	Space	
Minimum Sending Time(1-999)	10 ms	
Minimum Transmit Byte(1-1152)	960	

Refresh Save Configuration

Note: Local Port 22, 23, 69, 80, 161, 162, 21678 for the equipment inside the occupied port, do not use.
 Note: TCP Server mode only configure local port (monitor port) ; TCP need to configure the remote client mode IP, remote port.
 Note: UDP mode need to configure the local port (monitor port), remote IP, remote port.

San Telequip Private Limited.
 504 & 505 Deron Heights, Baner Road
 Pune 411045, India



Phone : +91-20-27273455, 9764027070, 8390069393 Connecting. Converting. Leading !
 email : info@santelequip.com

Template Config

This page is to set a batch of serial port parameters

- System Configuration
- Net Config
- VLAN Config
- Service Configuration
 - Serial Configuration
 - Template Config
 - Serial Information
 - Serial Statistics

Template Application

Property	Parameter
Template to the following serial	<input type="checkbox"/> 01 <input type="checkbox"/> 02 <input type="checkbox"/> 03 <input type="checkbox"/> 04 <input type="checkbox"/> 05 <input type="checkbox"/> 06 <input type="checkbox"/> 07 <input type="checkbox"/> 08 <input type="checkbox"/> Select All
LAN Mode Status	TCP Server
Number of remote users	1
Listening Port(1-65535)	8001
Remote IP/Port 1	192.168.0.169 8001
Remote IP/Port 2	none none
Remote IP/Port 3	none none
Remote IP/Port 4	none none
Baud Rate	9600
Data Bit	8
Stop Bit	1
Parity	Space
Minimum Sending Time(1-999)	10 ms
Minimum Transmit Byte(1-1152)	960

TCP Server, UDP Mode:
 Practical application to the serial port on the server "listening port" is the template "listening starting port+Serial No.-1".
 Practical application to the serial port on the server "Remote Port" is the template "Remote start port+(Serial No.-1)*4".
 For example, the starting listening port is 1001, if the application 10,11, then they correspond to ports 1010 and 1011, respectively.
TCP Client:
 Practical application to the serial port on the server "Remote Port" is the template "Remote start port".
 For example, the starting listening port is 1001, if the application 10,11, then they correspond to ports 1010 and 1011, respectively.
Note: Local Port 22, 23, 69, 80, 161, 162, 21678 for the equipment inside the occupied port, do not use.
Note: TCP Server mode only configure local port (monitor port) ; TCP need to configure the remote client mode IP, remote port.
Note: UDP mode need to configure the local port (monitor port), remote IP, remote port.

Serial Information

Display the current status information of all the serial ports.

- System Configuration
- Net Config
- VLAN Config
- Service Configuration
 - Serial Configuration
 - Template Config
 - Serial Information
 - Serial Statistics

Serial Information

Serial No.	LAN Mode Status	Listening Port	Remote IP/Port 1	Remote IP/Port 2	Remote IP/Port 3	Remote IP/Port 4	Baud Rate	Data Bit	Stop Bit	Parity	Minimum Sending Time	Minimum Transmit Byte
1	TCP Server	8001	---	---	---	---	9600	8	1	Space	10	960
2	TCP Server	8002	---	---	---	---	9600	8	1	No Parity	10	960
3	TCP Server	8003	---	---	---	---	9600	8	1	No Parity	10	960
4	TCP Server	8004	---	---	---	---	9600	8	1	No Parity	10	960
5	TCP Server	8005	---	---	---	---	9600	8	1	No Parity	10	960
6	TCP Server	8006	---	---	---	---	9600	8	1	No Parity	10	960
7	TCP Server	8007	---	---	---	---	9600	8	1	No Parity	10	960
8	TCP Server	8008	---	---	---	---	9600	8	1	No Parity	10	960

Serial Statistics

Check the detailed communication performance of each serial port.

- System Configuration
- Net Config
- VLAN Config
- Service Configuration
 - Serial Configuration
 - Template Config
 - Serial Information
 - Serial Statistics

Serial Statistics

Serial No.	Received from the Ethernet	Sent to the Serial Port	Received from the Serial Port	Sent to the Ethernet
1	0	0	0	0
2	0	0	0	0
3	0	0	0	0
4	0	0	0	0
5	0	0	0	0
6	0	0	0	0
7	0	0	0	0
8	0	0	0	0

Note:
 Auto refresh per 5 seconds.